

**SPECIAL DISTRICT PUBLIC DISCLOSURE DOCUMENT**

**WILDGRASS AT ROCKRIMMON METROPOLITAN DISTRICT NO. 1**

As required pursuant to Section 32-1-104.8 of the Colorado Revised Statutes (“C.R.S.”), this Public Disclosure Document has been prepared by Wildgrass at Rockrimmon Metropolitan District (the “District”) to provide information regarding the District.

**DISTRICT’S POWERS**

The powers of the District as authorized by Section 32-1-1004, C.R.S. and under its Service Plan, as approved by the City Council of the City of Colorado Springs, on September 11, 2007, are to plan for, design, finance, acquire, construct, complete, install, relocate and/or redevelop certain public improvements as described in the Special District Act.

**DISTRICT’S SERVICE PLAN**

The District’s Service Plan, which can be amended from time to time, includes a description of the District’s powers and authority. A copy of the District’s Service Plan is available from the Division of Local Government in the State Department of Local Affairs (“Division”).

The Wildgrass at Rockrimmon Metropolitan District is authorized by Title 32 of the Colorado Revised Statutes to use a number of methods to raise revenues for capital needs and general operations costs. These methods, subject to the limitations imposed by Section 20 of Article X of the Colorado Constitution (“TABOR”), include issuing debt, levying taxes, and imposing fees and charges. Information concerning District directors, management, meetings, elections, and current taxes are provided annually in the Notice to Electors described in Section 32-1-809(1), C.R.S., which can be found at the District office, on the District’s website, on file at the Division, or on file at the office of the Clerk and Recorder of El Paso County.

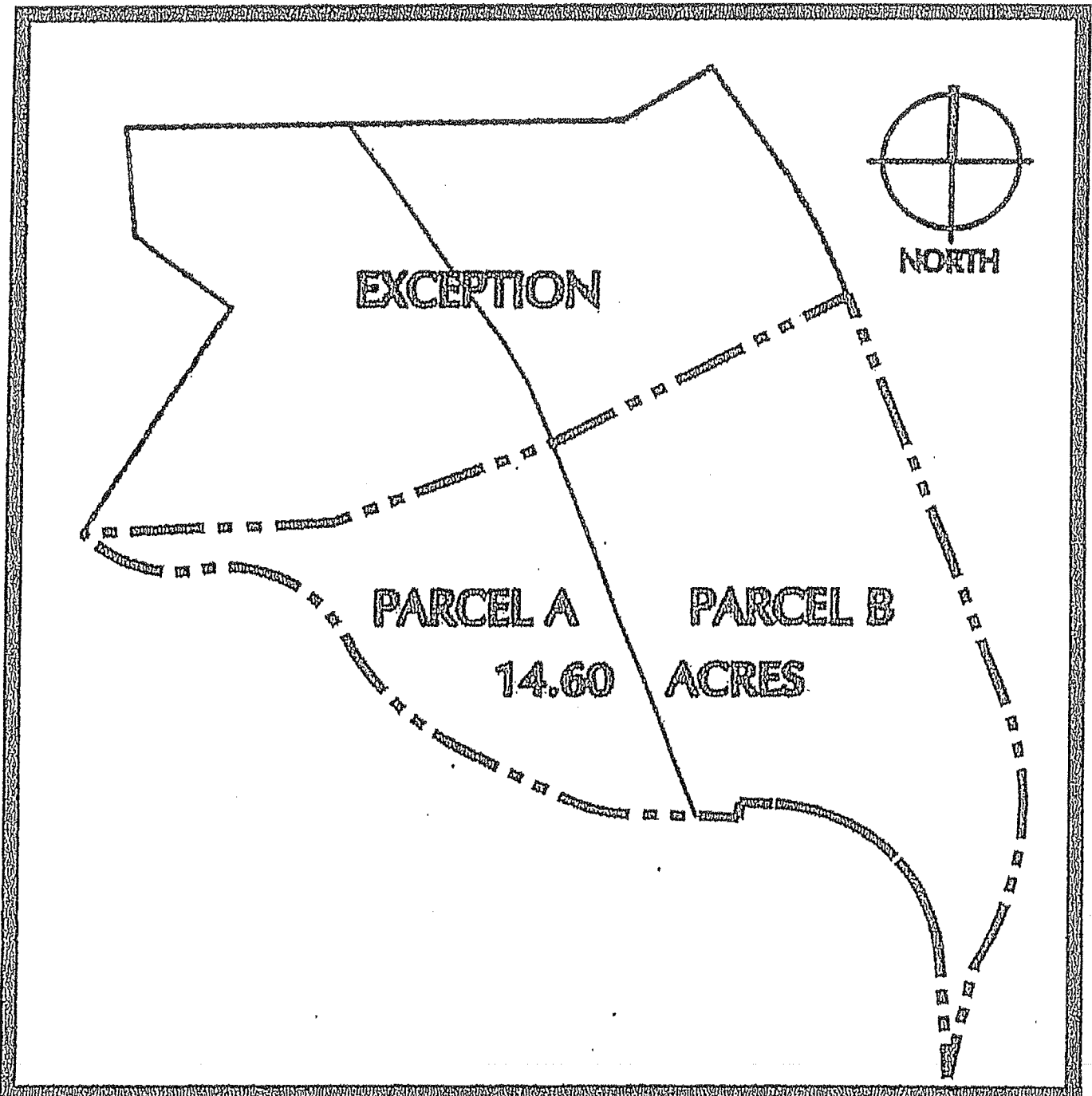
**DISTRICT MAP**

A map of the District’s boundaries is attached hereto as Exhibit A.

Dated this 17th day of November, 2014.

214119189

WILDGRASS AT ROCKRIMMON METROPOLITAN DISTRICT



EXISTING OWNERSHIP  
CONFIGURATION

SCALE: N.T.S.